

MB Bowco Manhole Step

Safe, Durable Underground Access

Overview

MB Bowco Manhole Steps feature injection-molded, copolymer polypropylene coated Grade 60, 1/2" rebar, for durable, corrosion-resistant, long-lasting access underground sewer and utility structures.

Updated Design: 10" MB Bowco Manhole Steps are double-faced for installation in either orientation.



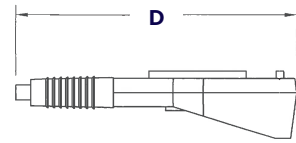
Features

- **Strong:** Minimum pullout strength of 400lbs, in accordance with ASTM C-497. Withstands vertical loads of 800lbs, satisfying ASTM C-478
- **Easy Installation** using sockets and locator accessories, available separately
- **Established:** DOT approved in over 30 states under the Bowco product name
- **Durable:** Copolymer polypropylene coating provides corrosion resistance and ensures the manhole steps will exceed the useful life of the utility structure
 - Copolymer polypropylene conforms to ASTM D-41 01 under Type 2
 - Grade 60, 1/2" rebar meets ASTM A-615
- **Approved:** Conforms to AASHTO M 199M/M Standard Specification for Precast Reinforced Concrete Manhole Sections. Designed to meet OSHA STD 1910.24 (b).
- **Options:** Available in black or orange, in 10" (double-faced) and 13" widths, and in 8 1/2" and 9 3/8" step depths
- **Safe:** Durable, non-slip surface



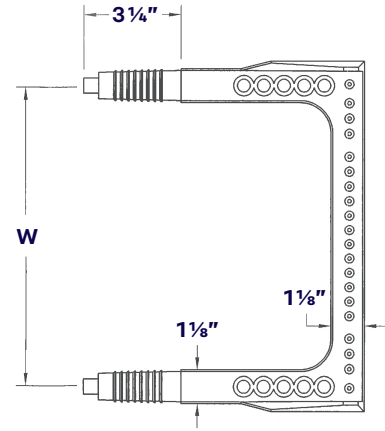
MB Bowco Manhole Step

Safe, Durable Underground Access



Product Data - MB Bowco Manhole Step

Item Number	Description	W	D	Packaging
BC110030	81213-R Black Step	13"	8 1/2"	25 / box 600 / plt
BC110040	81213-R Orange Step	13"	8 1/2"	25 / box 600 / plt
BC110140	93810-R Black Step Double-Faced	10"	9 3/8"	25 / box 700 / plt
BC110150	93810-R Orange Step Double-Faced	10"	9 3/8"	25 / box 700 / plt
BC110220	93813-R Black Step	13"	9 3/8"	25 / box 600 / plt
BC110240	93813-R Orange Step	13"	9 3/8"	25 / box 600 / plt



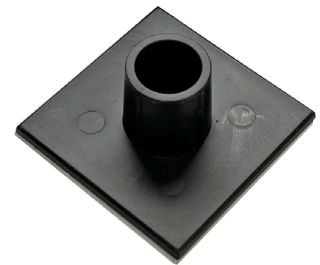
SP Socket

- Works well with Dry Cast applications
- Excellent for vacuum testing
- Use removable pin to hold in place



OR Socket

- Works well with flat or round wall structures – Wet or Dry Cast
- Mounts to wood or steel forms using threaded holes in closed end



SPSL-1 Socket Locator

- The SPSL-1 adhesive step socket locator helps secure proper placement of the manhole step socket prior to concrete pouring



SSB Socket

- Works well for round wall forms
- Socket breaks away from form when stripping
- Inserts into pre-drilled holes in form
- Keyed to ensure correct installation

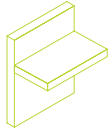


Sizing Pin

- Used to easily create installation locations

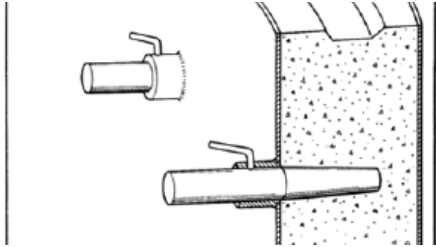
Product Data - MB Bowco Manhole Step Accessories

Item Number	Description	Packaging
BC110390	SP Socket	400 / box
BC110420	SSB Socket	400 / box
BC110340	OR Socket	420 / box 10,080 / plt
BC110410	SPSL-1 Locator	250 / box
BC110380	Sizing Pin	200 / box



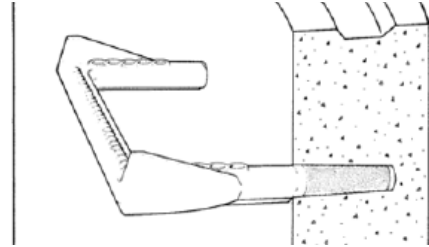
MB Bowco Manhole Steps

Installation Guide



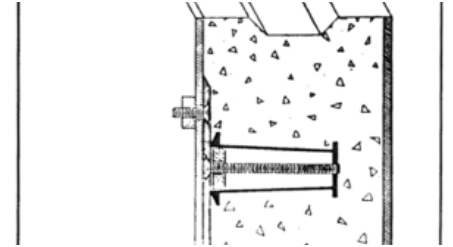
Drilling Holes in New or Old Concrete

To install steps into new or old concrete use a heavy-duty impact or electric drill with the appropriate size bit.



On-the-job installation of steps in new or old concrete:

1. Use a 1 1/8" drill bit. Drill two holes 3 3/8" deep on 10" or 13" centers.
2. Grout the step in with a non-shrink 3,000 PSI or greater grout.



For field and in-plant installation by an installer who is not familiar with drilling holes in concrete:

1. Use a 7/8" drill bit. Drill two holes 3 3/8" deep on 10" or 13" centers.
2. Pound the step in with a rubber mallet.

