

Super Lynk

Permanent Panel-to-Foundation Connections

Overview

Super Lynk is a panel-to-foundation connection system that eliminates the need for epoxy or grouted anchors and field welds.

Super Lynk is a fast, strong and discrete way to permanently connect concrete panels to footings. It requires only a single bolt to make the connection and can easily be concealed within the normal grout line process.

Features

- **Simple Installation:** The single bolt connection is simple and quick to install while eliminating the need for epoxy, grout, and in-field welding, saving you time and money.

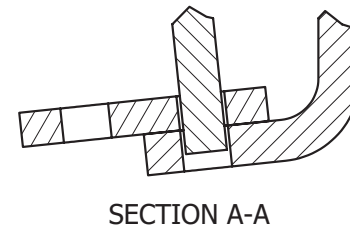
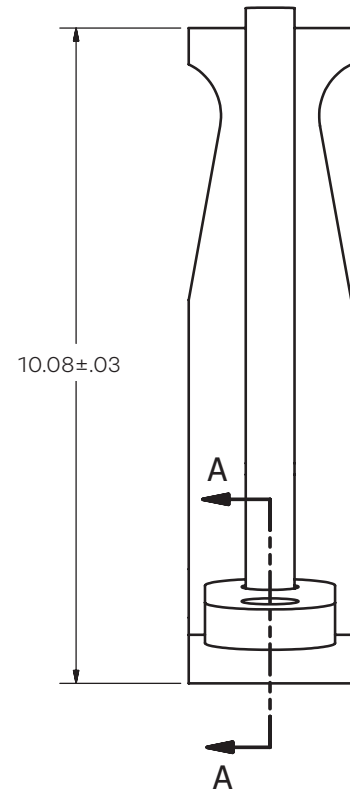
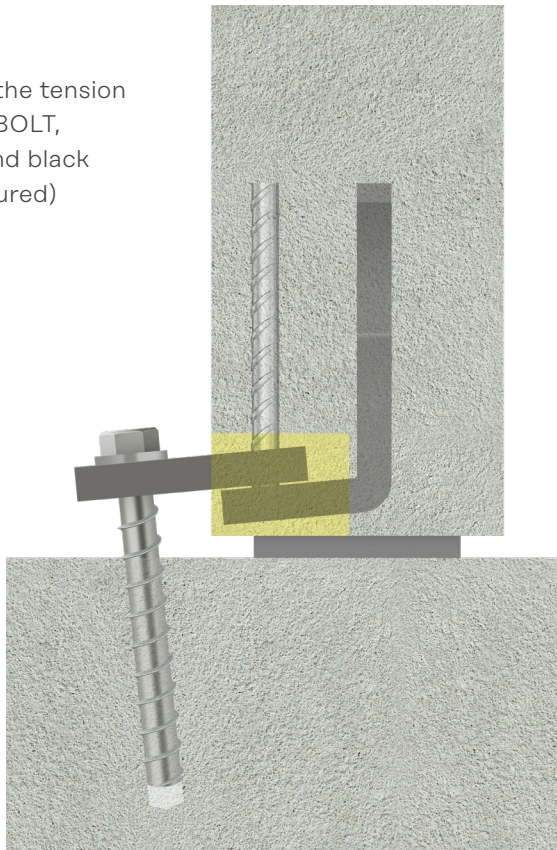
- **Minimal Profile:** With a profile less than 2½", the Super Lynk is discrete relative to alternative connection systems and can easily be concealed by normal backfill and landscaping.
- **Engineered Connection:** The engineered, patented connection system has been developed by Leviat's R&D team to meet ACI 318-14 16.2.4.3 (b).



Super Lynk

Permanent Panel-to-Foundation Connections

Super Lynk includes the tension anchor, MKT SUP-R-BOLT, 1 1/2" MB Tuff Chair and black void former (not pictured)

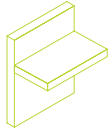


Product Data - Super Lynk

Item Number	Void Former Color	Tension Load	Width	Height	Minimum Panel Thickness	Weight per Unit
MBSLYNK	Black	10,000 lbs	8"	10"	6"	10 1/2 lbs

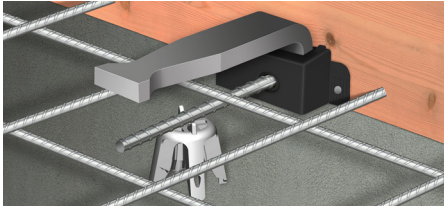
1. Published Ultimate Load is based on 2,500 psi concrete
2. 8" Minimum edge distance for MKT SUP-R-Bolt.
3. Minimum edge distance to end of panel is 12". Minimum o.c. spacing is 24".
4. Super Lynk shipment includes one 1 1/2" tall MB Tuff Chair, one 3/4" x 10" MKT SUP-R-BOLT, and black void former

US PATENT 10,577,789



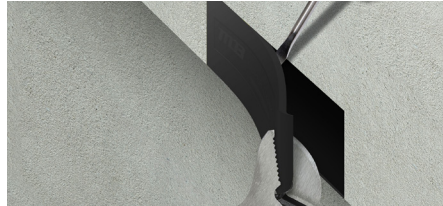
MB Super Lynk

Installation Guide



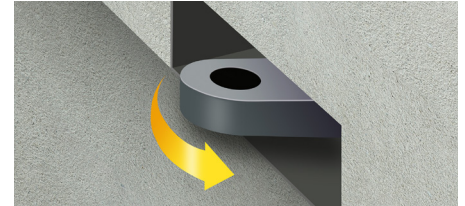
1. Attach to the Form

Attach the anchor to the bottom corner of the panel form with the screws or nails through the side tabs of the void and into the wood form. Use a 1 ½" MB Tuff Chair to support the anchor, and hold embossed side of the void flat to the bottom of the panel and tight to the form.



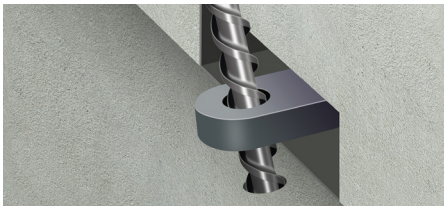
2. Remove Void Cover

Following panel erection, remove the void cover, revealing the Pivot Link.



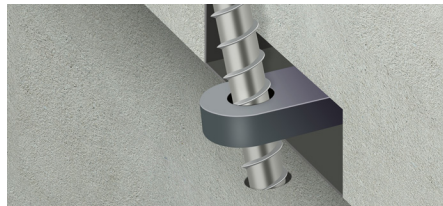
3. Access Pivot Link

Rotate the Pivot Link until it protrudes outside of the panel face.



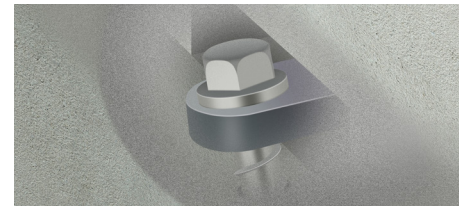
4. Drill the Anchor Hole

Mark the location for the drill hole beneath the eye of the Pivot Link. Using the proper bit size, drill a ¾" hole into the base to the required depth of 9". The tolerances of the drill bit used should meet the requirements of ANSI standard B212.15. Remove dust and debris from hole during drilling (e.g. dust extractor, hollow bit) or following drilling (e.g. suction, forced air) to extract loose particles created during drilling.



5. Anchor into the Foundation

Using a maximum torque of 150 ft-lbs, an impact wrench rating not exceeding 380 ft-lbs, and 1 ⅛" hex socket/driver, mount the Screw Anchor head into the socket. Drive the MKT SUP-R-BOLT until the head of the anchor comes in contact with the Lynk. The screw anchor washer head must be snug after installation. Do not spin the hex socket off the anchor head when disengaging.



6. Panel is Permanently Connected to the Foundation

The normal grouting process around the bottom of the panel should be followed to include the Super Lynk and bolt head. This grout encasement will fill any gap between the Super Lynk and footing to provide a uniform finish, and avoid any potential for lateral movement.

MKT SUP-R-BOLT is a product of MKT Fastening, LLC